






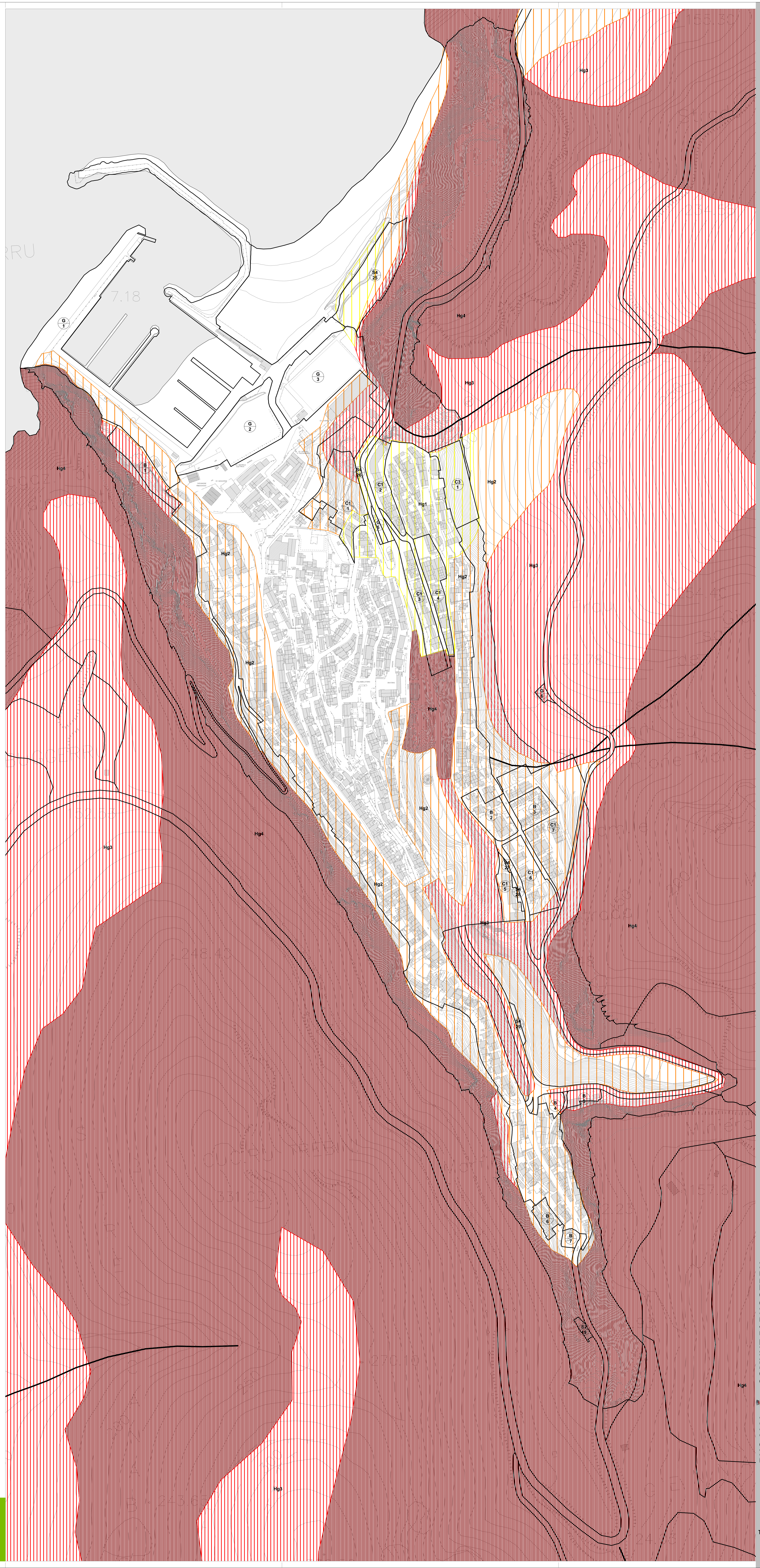
 Limite amministrativo Comune di Buggerru  
 Perimetro di zona territoriale omogenea  
 Tipo Z.T.O. B, C, G, S  
 Numero progressivo Z.T.O.

**PERICOLOSITÀ GEOLOGICA** (Fonte: studio ing. Lai - novembre 2019)  
 **Hg4** Pericolosità geologica molto elevata (Hg4) - Art. 31 N.A. PAI  
 **Hg3** Pericolosità geologica elevata (Hg3) - Art. 32 N.A. PAI  
 **Hg2** Pericolosità geologica media (Hg2) - Art. 33 N.A. PAI  
 **Hg1** Pericolosità geologica moderata (Hg1) - Art. 34 N.A. PAI



# Legenda

**Contributi specialistici**  
 dot. geol. Irene COSSU - INGEGNERIA  
 dot. Francesco BONATO - INGEGNERIA  
 dot. in Scienze Ambientali Lucia FULFIONI  
 ing. Emma LOVERITALI  
 ing. Luca POLLASTRI  
 ing. Nicola RICCIARDI GRANONZI

**Coordinamento operativo**  
 un. Fabio VANIN

**Progettisti**  
 un. Daniela BALLO  
 un. Stefania GEROMETTA

**Il Responsabile Ufficio Tecnico**  
 ing. Alessandro GRECO

**Il Segretario Comunale**  
 dot. ssa Giovanna Paola MUSCÀ

**Il Sindaco**  
 Laura CAPELLI

**Il Segretario Comunale**  
 dot. ssa Giovanna Paola MUSCÀ

**PUC 2020**  **COMUNE DI BUGGERRU**  
 Piano Urbanistico Comunale (PUC)  
 Legge Regionale n. 45/1989 s.m.l.  
**Sovrapposizione tra pericolosità geologica e zoning PUC.**  
 Ambito urbano  
 dicembre 2019

  
**DREAM** engineering